

Quickstart Guide

Tango M2

SunTech
Tango M2[®]
STRESS BP



SunTech Medical, Inc.
507 Airport Boulevard, Suite 117
Morrisville, NC 27560-8200 USA
Tel: + 1.919.654.2300
1.800.421.8626
Fax: +1.919.654.2301
SunTechMed.com



SunTech Medical, Ltd.
Oakfield Industrial Estate
Stanton Harcourt Road
Eynsham, Oxfordshire OX29 4TS
England
Tel: + 44 (0) 1865.884.234
Fax: + 44 (0) 1865.884.235
SunTechMed.com

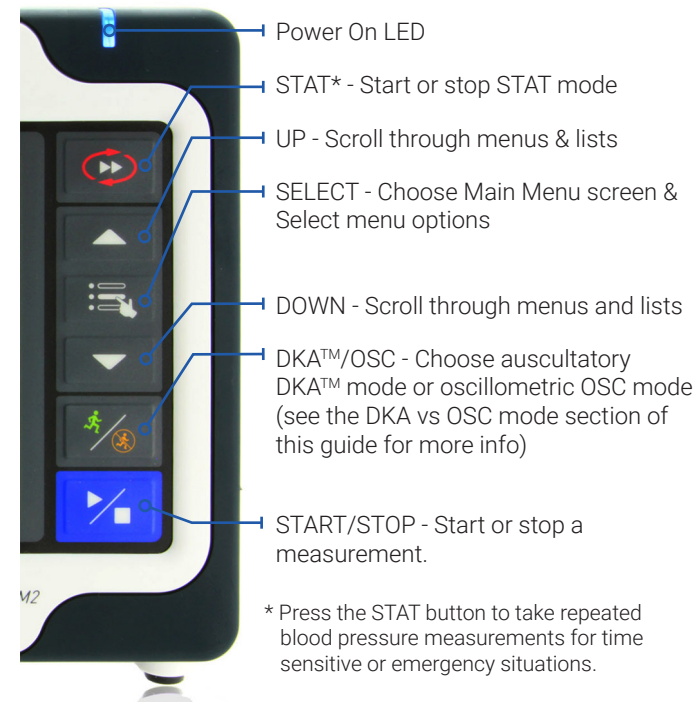
SunTech Medical (Shenzhen) Co., Ltd.
105 HuanGuan South Road, Suite 15 2~3/F
DaHe Community Guanlan,
LongHua District, Shenzhen
GuangDong PRC 518110
Tel.: + 86.755.29588810
+ 86.755.29588986 (Sales)
+ 86.755.29588665 (Service)
Fax: + 86.755.29588829
SunTechMed.com.CN

SunTech Medical
The Difference in Clinical Grade™



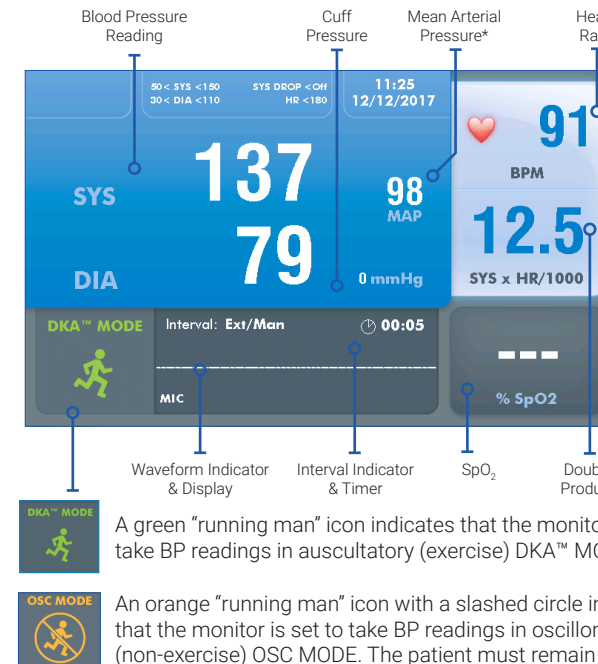
0413
82-0124-00 MA Rev. D

Front Panel



Measurement View

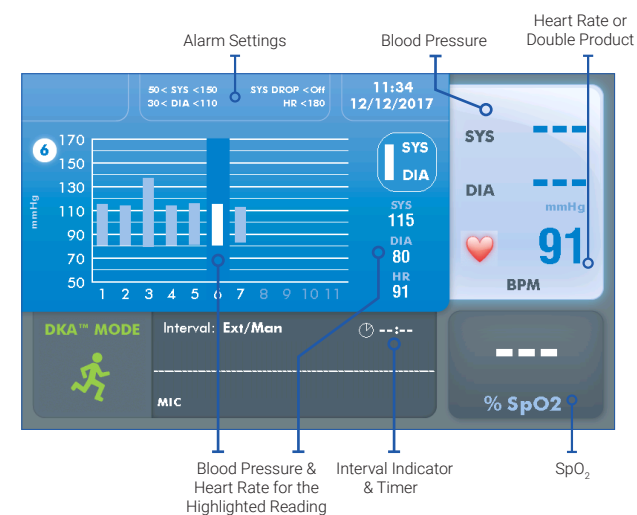
The Measurement View displays the current or most recent patient measurements as numeric readings.



* Not available in all countries see User Manual for details.

Graph View

The Graph View displays a summary of the most recent BP measurements, in addition to numeric display of other readings.



Welcome to Tango M2



Thank you for choosing this Tango M2 blood pressure (BP) monitor.

For over 30 years, SunTech Medical® has been the preeminent supplier of leading edge technology and innovative products to obtain blood pressure measurements when manual readings are unreliable or simply not possible.

Today, we remain focused on the continual advancement of clinical grade blood pressure technology.

Tango M2 is the latest in our line of Tango Stress Test Blood Pressure Monitors, designed specifically to work with your stress system.



Operating instructions for this product may be found on the CD included in the box. Download operating instructions for this product by visiting suntechmed.com/library.

View the instructions using Adobe Acrobat Reader, or any compatible PDF reader, on any computer or mobile device with an internet connection.

First Time Setup & Operation

1

Step 1 – Unpacking the Tango M2

Make sure you have all the proper components. Refer to the packing label on the inner box tray for the list of components you received based upon your order.

Connect the Power Supply to a Power Cable, and plug into an AC power outlet. Connect the Power Supply to the DC input connector on the back of the monitor.

Use the ON/OFF (1) button on the back of the monitor to turn it on. The blue LED (2) on the top of Tango M2 will be lit whenever the monitor is powered on.



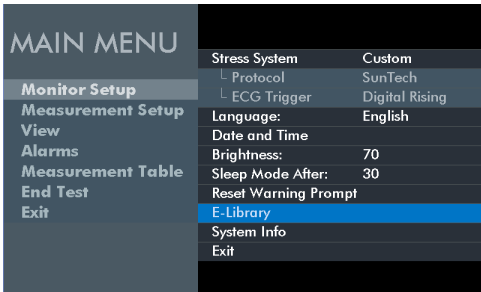
2

Step 2 – Connecting the Stress System

Connect your stress system using the BNC external ECG cable and RS-232 or USB cable.

To connect your stress system, visit www.SunTechMed.com and choose: [Support > Customer Technical Support > Download Library > Stress BP Monitors > Tango M2 >Interface Notes](#) for a list of available Interface Notes.

You may also reference the Tango M2’s E-Library, choose: [Main Menu > Monitor Setup > E-Library > Interface Notes](#) for a list of available Interface Notes.



4

Step 4 – Taking a Measurement

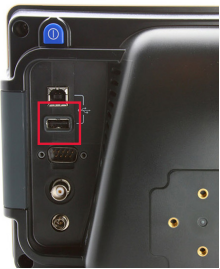
Tango M2 requires an ECG signal to take BP measurements and must be set to DKA Mode while the patient is exercising. Once the test begins, the stress system will prompt the monitor to take BP readings. The cuff will automatically inflate for each measurement. The message “RELAX ARM BP in progress” will be displayed until the measurement is complete; the reading will then be displayed. You can also press the START/STOP button to manually prompt the monitor to take BP readings. This same button can be used to abort a reading if necessary.



5

Step 5 – Downloading Data

1. Insert the USB-A key into the Tango M2 (1)
 2. Use the Arrows and Select Keys to navigate to the [Main Menu > Measurement Table >](#) press the Select Key.
 3. Navigate to the Download Data selection and press the Select Key.
 4. A message will come up saying Download in Progress, when this is complete press the Select Key to Exit. You may now remove the USB-A Key.
 5. Connect your USB-A Key to your PC. When the window opens there will be a file called Results. Open this file.
 6. Inside the file there will be a document that needs to be identified. It will start with the year followed by the month and date and other identifiers; set up like (1) YYYYMMDD#####. This is the unique identifier for each new BP data set that is pulled off the Tango M2.
- For further detailed instructions please see User Manual for details.



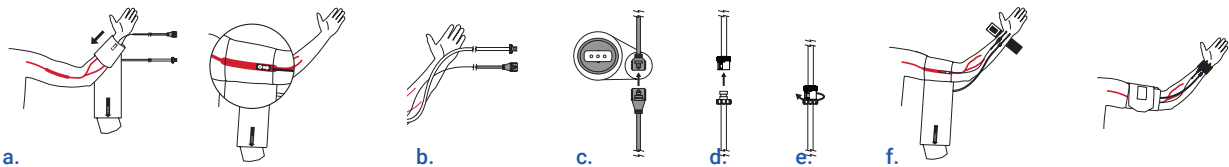
3

Step 3 – Placing and Connecting the Cuff

Use either a SunTech Orbit-K™ blood pressure cuff or a SunTech Single Patient Use kit (containing a disposable blood pressure cuff and microphone pad). This section gives directions for proper size selection and placement of either style of cuff. It is important that the cuff is properly fitted to the patient’s arm, and that the microphone is placed over the brachial artery (between the bicep and tricep)! Improper cuff sizing and a misplaced microphone can lead to missed or poor readings and accuracy.

Orbit-K Cuff

- a. Locate the brachial artery on the left arm.
- b. Slide the cuff sleeve up the patient’s arm, with the “ARTERY” marker pointing down the arm.
- c. There is a microphone located under the “ARTERY” marker. Make sure the microphone is placed on the inner portion of the arm, directly over the brachial artery between the bicep & tricep. There should be about 3 to 5 cm (two finger widths) between the edge of the cuff and the elbow.
- d. Insert the 3-pin microphone connector from the cuff into the corresponding connector on the Patient Cable. The connector can be inserted in any orientation.
- e. Connect the tube from the cuff into the corresponding connector on the Patient Cable and twist.
- f. Wrap the cuff around the arm and secure. Use the wrist straps to secure the cables to the patient’s wrist.



Single Patient Use Kit

- a. Locate the brachial artery on the left arm.
- b. Place the microphone onto the microphone pad. Peel the protective film from the microphone pad.
Note: the single patient use kit uses the microphone from the Orbit-K cuff.
- c. Place the microphone on the patient’s arm making sure that the microphone is placed on the medial part of the arm, directly over the brachial artery between the bicep and tricep. There should be about 3 to 5 cm (two finger widths) between the microphone pad and the elbow.
- d. Wrap the cuff around the arm and secure.
- e. Insert the 3-pin microphone connector from the cuff into the corresponding connector on the Patient Cable. The connectors can be inserted in any orientation. Connect the tube from the cuff into the corresponding connector on the Patient Cable and twist.
- f. Use the wrist straps to secure the cables to the patient’s wrist.

