

# Name of the institution

Address

1000 City

web: <http://www.website.com>  
e-mail: [your@address.com](mailto:your@address.com)  
phone number: 080 1234  
fax number: 080 1234

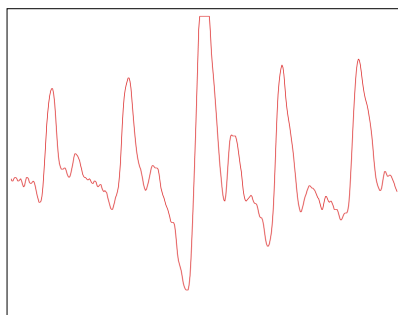
## Patient details

test

date: 3/21/2017  
time: 4:44 PM  
device: MESI ABPI MD

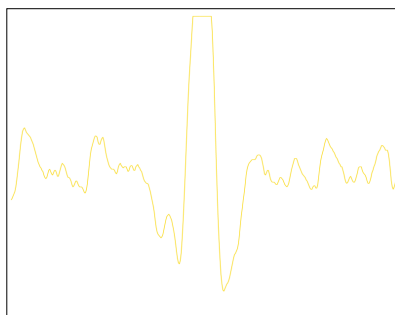
## Measurement results

### ARM



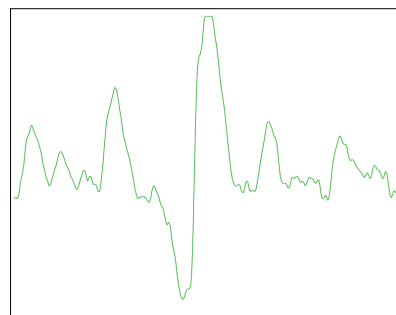
Systolic pressure **118 mmHg**  
Diastolic pressure **73 mmHg**  
Mean pressure **95 mmHg**

### LEFT ANKLE



Systolic pressure **154 mmHg**  
Diastolic pressure **74 mmHg**  
Mean pressure **82 mmHg**

### RIGHT ANKLE



Systolic pressure **155 mmHg**  
Diastolic pressure **78 mmHg**  
Mean pressure **127 mmHg**

<b>Brachial pressure</b>	<b>Heart rate</b>	<b>Left ABI</b>	<b>1.31</b>
<b>118/ 73</b>	<b>74</b>	<b>Right ABI</b>	<b>1.31</b>

## Results description

physician:

> 1.40	1.40 - 1.00	0.99 - 0.91	0.90 - 0.51	< 0.51
NonCompressible	Normal	Borderline	Abnormal	Severe

Tendera et al.: ESC Guidelines on the diagnosis and treatment of peripheral artery diseases, EHJ 2011;32:2851-906

This handout was automatically generated with application MESIresults, developed by company MESI. Measurement was performed by Automated Ankle Brachial Pressure Index Measuring Device. For more information visit our web page [www.mesimedical.com](http://www.mesimedical.com).